

Royal Preston Hospital Emergency Department

Monthly Bulletin: January to December 2012

This bulletin provides a breakdown of all injury attendances at Royal Preston Hospital Emergency Department (ED) between January and December 2012.

Between January and December 2012 there were 29,986 attendances to Royal Preston Hospital ED. The month with the highest attendances was March with 2,792 (**Figure 1**). There were more male than female attendances presenting at Royal Preston Hospital ED (males=16,493; 55%).

Figure 2 illustrates age group of ED attendances for each month. For all injuries the highest proportions of attendances were for persons aged 30-59 (n=8,899; 30%) and 15-29 (n=8,526; 28%) years old.

Table 1 details the injury group of ED attendances. In almost two-fifths (39%) of attendances, injury group was recorded as fall. Other injury accounted for 37% of attendances, sports injury 9%, road traffic collisions (RTC) 9% and assaults 5%.

Table 2 illustrates the location of incident for patients attending the Royal Preston Hospital ED. The primary locations of injury were home (34%) and public place (25%). The discharge destination for injury attendances is displayed in **Table 3**. It indicates that half (50%) of attendances were discharged with no follow-up treatment. Nearly a

fifth (18%) of attendances were discharged into the care of their GP and 11% went to the fracture clinic.

Assault attendances

Between January and December 2012 there were 1,521 assault attendances to Royal Preston Hospital ED. The month with the highest attendance was September with 152 attendances (**Figure 3**). There were more male than female assault attendances presenting at Royal Preston Hospital ED (males=1,107; 73%).

Table 4 details the age group of assault attendances for each month. The majority of ED assault attendances were aged 15-29, (n=888; 58%) and over a third (34%) were aged 30-59 (n=523) years.

Table 5 illustrates the incident location for assault attendances to Royal Preston Hospital ED. The primary incident locations for assault attendances were in a public place (45%), followed by other (16%) and home (16%).

The discharge destination for assault attendances is displayed in **Table 6**. It indicates that over four in ten (45%) of assault attendances were discharged with no follow-up treatment. Over a third (34%) of assault attendances required follow-up treatment and 8% were admitted to hospital.

Figure 1: Gender of ED injury attendances by month, January to December 2012

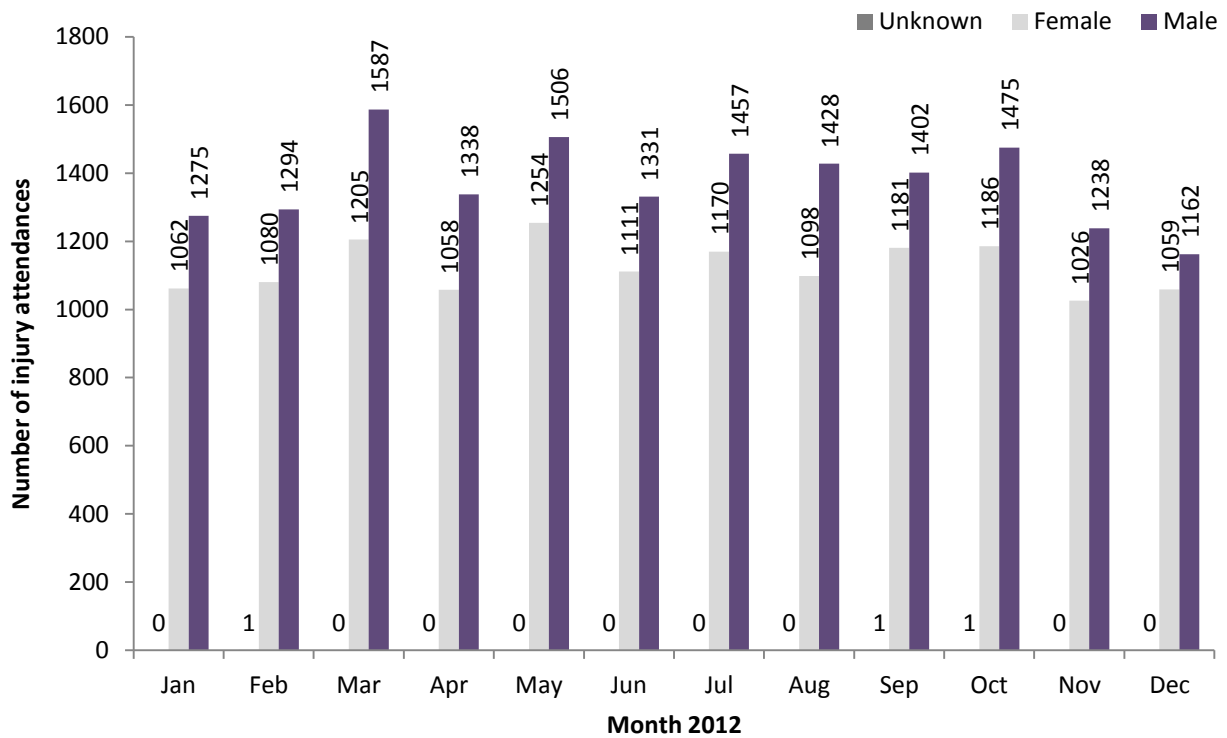


Figure 2: Percentage of ED injury attendances by age group and month, January to December 2012

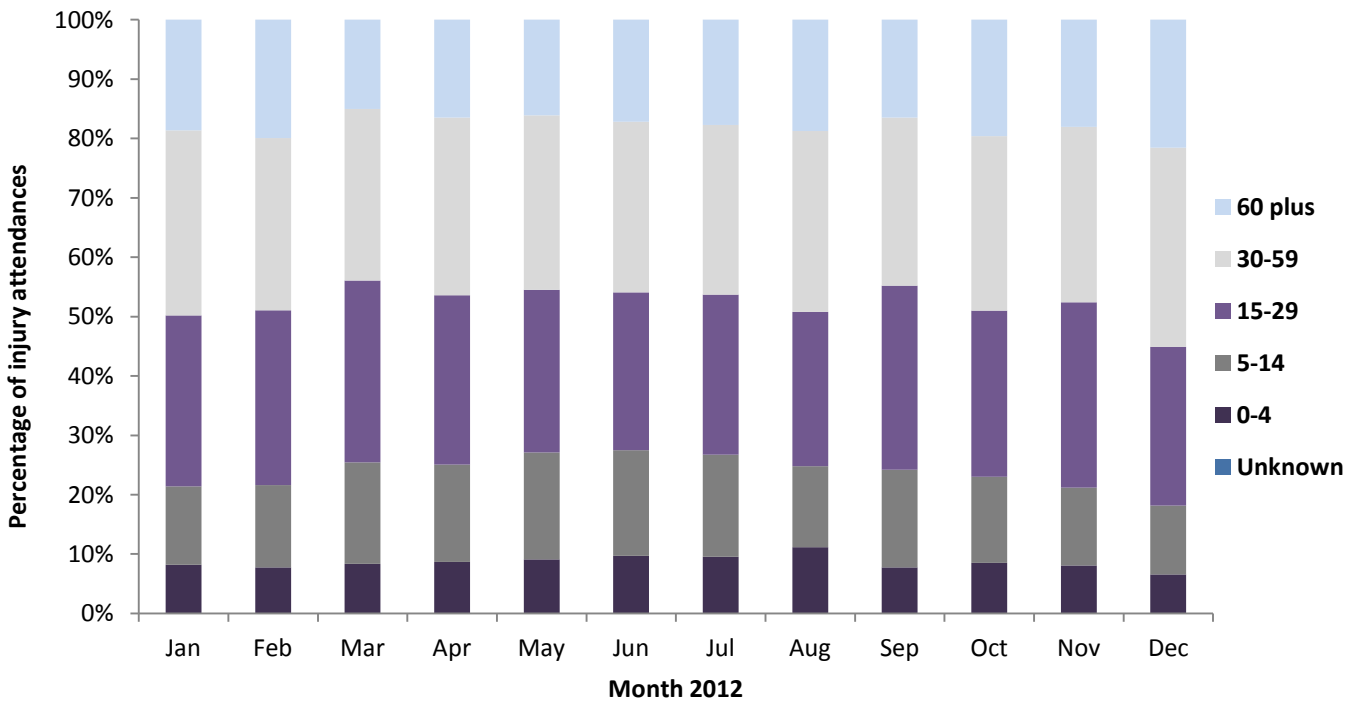


Table 1: ED injury attendances by injury group and month, January to December 2012

Injury group	Jan	Feb	Mar	Apr	May	Jun	Jul	Aug	Sep	Oct	Nov	Dec	Total	%
Fall	940	1066	997	856	1056	991	1004	1002	1073	978	855	930	11748	39
Other injury	812	722	1082	925	1115	939	1066	1031	853	971	788	812	11116	37
Sports injury	196	230	337	276	274	179	214	130	279	297	219	142	2773	9
RTC	249	206	233	209	170	182	211	222	215	278	251	191	2617	9
Assault	122	126	115	118	135	133	110	125	152	129	129	127	1521	5
Deliberate self-harm	18	25	28	12	10	18	22	16	12	9	22	19	211	1
Total	2337	2375	2792	2396	2760	2442	2627	2526	2584	2662	2264	2221	29986	100

Table 2: ED injury attendances by incident location and month, January to December 2012^{1,2,3}

Location	Jan	Feb	Mar	Apr	May	Jun	Jul	Aug	Sep	Oct	Nov	Dec	Total	%
Home	814	825	855	815	881	849	869	854	787	873	773	860	10055	34
Public place	570	601	660	598	682	606	672	700	694	670	575	575	7603	25
Work	223	195	242	200	248	209	246	250	229	249	227	186	2704	9
Sport	176	206	311	269	251	179	230	137	249	279	201	133	2621	9
Other	197	222	237	229	211	197	194	260	217	209	168	197	2538	8
Educational establishment	155	148	223	<78	175	112	120	***	139	184	147	105	1589	5
Other persons home	64	48	66	83	77	62	57	63	54	52	45	49	720	2
Garden	15	24	51	41	98	74	69	87	31	32	22	14	558	2
Public building	75	44	47	20	15	29	44	47	74	36	51	63	545	2
Holiday	13	21	19	29	31	52	45	54	46	23	17	6	356	1
Public park/playground	6	16	30	15	51	44	40	43	31	22	12	13	323	1
Nursery	8	15	18	8	13	11	12	16	9	12	***	***	128	0
Hospital	***	***	15	***	11	8	10	6	9	8	9	7	95	0
Prison	5	***	9	***	9	6	9	***	8	***	5	8	74	0
Special event	7	***	***	***	7	***	8	***	***	7	***	***	43	0
Public transport	5	***	7	***	***	***	***	***	***	***	5	***	29	0
Bus station	***	***	***	***	***	***	***	***	***	***	***	***	5	0
Total	2337	2375	2792	2396	2760	2442	2627	2526	2584	2662	2264	2221	29986	100

Table 3: ED injury attendances by discharge destination and month, January to December 2012^{4,5}

Discharge destination	Jan	Feb	Mar	Apr	May	Jun	Jul	Aug	Sep	Oct	Nov	Dec	Total	%
Discharged - no follow-up	1130	1145	1373	1163	1304	1150	1155	1168	1340	1456	1310	1328	15022	50
Discharged - follow-up by GP	410	455	529	487	600	544	672	534	437	370	166	165	5369	18
Fracture clinic	241	230	295	265	297	276	263	257	282	324	250	252	3232	11
Admitted RPH	204	210	185	206	228	177	214	240	231	203	225	216	2539	8
Other	98	73	108	75	71	55	101	67	57	72	80	58	915	3
Left before being treated	60	97	97	62	85	86	53	88	57	69	71	49	874	3
ED clinic	77	71	74	50	74	35	65	62	67	55	54	61	745	2
Outpatient clinic	64	41	74	52	67	68	51	75	64	57	59	53	725	2
Other healthcare professional	35	28	38	23	20	34	34	28	36	37	36	28	377	1
Left having refused treatment	8	9	7	***	8	8	7	***	***	8	9	7	79	0
Transferred to other HCP	8	10	9	7	***	5	8	***	6	6	***	***	69	0
Police custody	***	***	***	***	***	***	***	***	5	***	***	***	31	0
Admitted CDGH	***	***	***	***	***	***	***	***	***	***	***	***	9	0
Total	2337	2375	2792	2396	2760	2442	2627	2526	2584	2662	2264	2221	29986	100

Assaults

Table 4: ED assault attendances by age group and month, January to December 2012

Age group	Jan	Feb	Mar	Apr	May	Jun	Jul	Aug	Sep	Oct	Nov	Dec	Total	%
0-4	***	***	***	***	***	***	***	***	***	***	***	***	11	1
5-14	6	***	6	6	12	7	***	5	7	10	***	***	71	5
15-29	64	71	62	60	72	83	69	70	102	72	85	78	888	58
30-59	49	50	44	49	48	39	35	44	39	43	40	43	523	34
60 plus	***	***	***	***	***	***	***	***	***	***	***	***	28	2
Total	122	126	115	118	135	133	110	125	152	129	129	127	1521	100

¹ Educational establishment includes: educational establishment; school other; school; school playground; and school sport. 'Public place' includes public place and playing out.

² Please note that all numbers less than five have been suppressed (with ***) in line with patient confidentiality and if there is only one number less than five in a category then two numbers will be suppressed to prevent back calculations from totals.

³ Please note percentages might not add to one hundred due to rounding.

⁴ Admitted to RPH includes: admitted to Royal Preston Hospital (RPH); and, admitted to the Avondale Unit. Other includes: primary care; other; dead on arrival; sea and waterway; and died in department. HCP=Health care provider and GP=general practitioner.

⁵ 'Admitted to CDGH' includes: admitted; admitted to Chorley and South Ribble Hospital (CDGH); admitted to Healey/Yarrow Ward.

Figure 3: Number of ED assault attendances by gender and month, January to December 2012

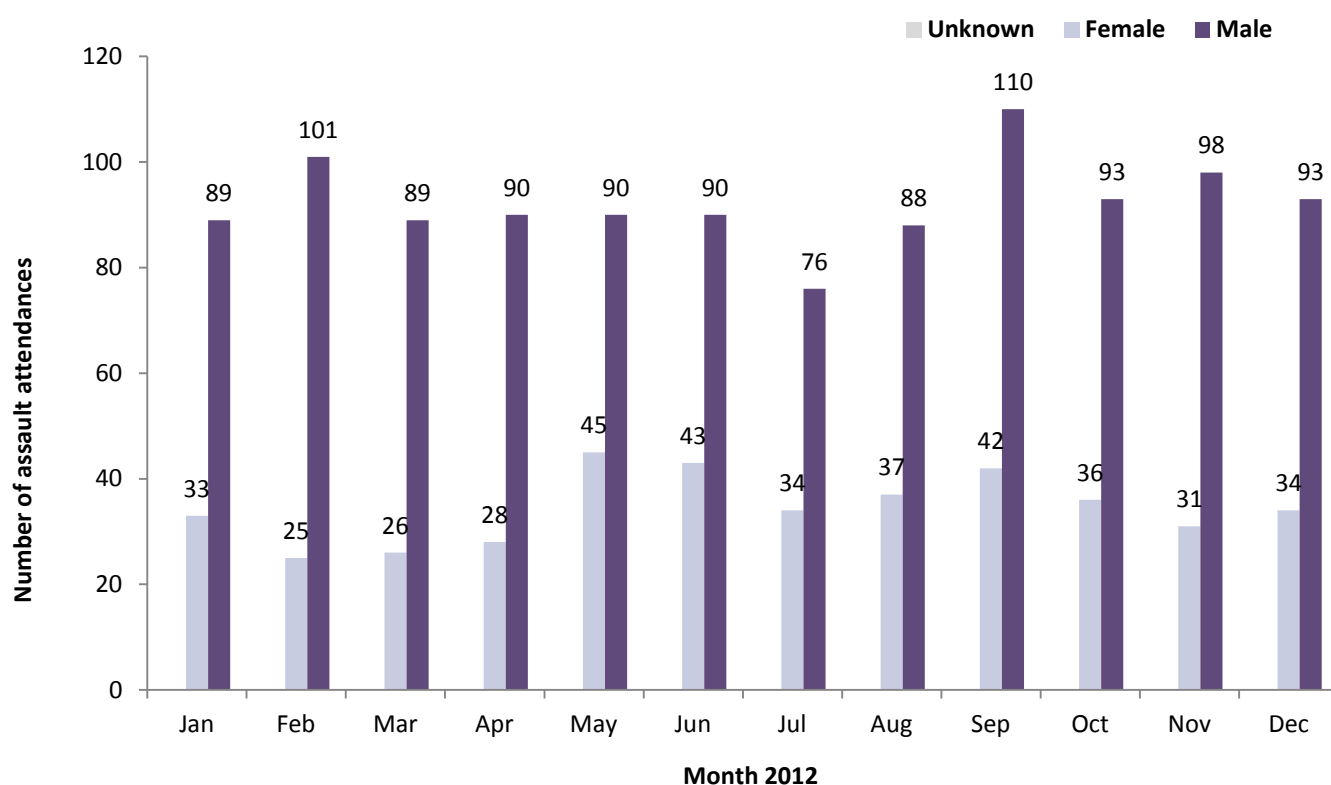


Table 5: ED assault attendances by incident location and month, January to December 2012

Location	Jan	Feb	Mar	Apr	May	Jun	Jul	Aug	Sep	Oct	Nov	Dec	Total	%
Public place	53	60	53	62	69	56	45	53	58	57	57	60	683	45
Other	13	20	13	21	22	36	22	19	26	19	17	22	250	16
Home	26	19	18	19	21	24	10	24	20	24	20	16	241	16
Public building	16	12	13	***	***	***	21	15	21	10	15	15	143	9
Work	***	5	6	5	11	8	***	6	5	***	13	***	72	5
Other persons home	***	6	***	5	***	***	***	6	10	5	***	***	49	3
Educational establishment	***	***	***	***	***	***	***	***	5	***	***	***	27	2
Prison	***	***	5	***	***	***	***	***	***	***	***	***	23	2
Public park/playground	***	***	***	***	***	***	***	***	***	***	***	***	13	1
Holiday	***	***	***	***	***	***	***	***	***	***	***	***	5	0
Sport	***	***	***	***	***	***	***	***	***	***	***	***	5	0
Bus station	***	***	***	***	***	***	***	***	***	***	***	***	***	0
Garden	***	***	***	***	***	***	***	***	***	***	***	***	***	0
Hospital	***	***	***	***	***	***	***	***	***	***	***	***	***	0
Special event	***	***	***	***	***	***	***	***	***	***	***	***	***	0
Total	122	126	115	118	135	133	110	125	152	129	129	127	1521	100

Table 6: ED assault attendances by discharge destination and month, January to December 2012

Discharge destination	Jan	Feb	Mar	Apr	May	Jun	Jul	Aug	Sep	Oct	Nov	Dec	Total	%
Discharged	46	62	53	48	54	59	38	49	80	61	68	69	687	45
Follow-up	50	38	36	44	59	51	45	46	47	34	31	37	518	34
Other	12	19	17	16	16	16	19	15	11	19	16	12	188	12
Admitted	14	7	9	10	6	7	8	15	14	15	14	9	128	8
Total	122	126	115	118	135	133	110	125	152	129	129	127	1521	100

Published March 2013

Johnathan Rooney (TIIG Officer)

Centre for Public Health, Liverpool John Moores University, 2nd Floor, Henry Cotton Campus, Liverpool, L3 2ET

Tel: 0151 231 4539 Email: j.rooney@ljmu.ac.uk

Website: www.tiig.info (please note data requests should be made through the website)